

Welcome

We are proud to present, for the first time ever, the SIGGRAPH Fulldome Video Production Showcase. We have invited a sampling of the world's best and most interesting digital dome artists and students to present and discuss their work at the Reuben H. Fleet Science Center's IMAX® Dome Theater. The theater has been fitted with a temporary fulldome video display system provided by Spitz, Inc. and participating vendors (DVS Digital Video, Elumens Corp., and JVC Americas Corp.).

All Fulldome Showcase productions were produced using a 1536x1536 pixel polar fisheye frame called a *dome master*. These frames are played back uncompressed from a hard drive player and are fed to the QXGA resolution projector. Dual playback and projection systems are employed to achieve sufficient brightness for the Fleet's 23 meter dome screen. Our presentations are also complemented by the Fleet's 6.1 surround-format audio system.

We believe that the creativity and expertise of our fulldome video producers shines brightly despite any technical limitations of our medium when compared to film. As a new medium, fulldome video is ripe for exploration. We invite you to explore with us as we pioneer new storytelling devices, special effects, artistic environments and more. It is our hope that this event, in time, becomes an annual SIGGRAPH tradition.

Enjoy.



Ed Lantz

Event Organizer

This event was made possible by the generous support of the following institutions. Thanks to all the individuals who made this event a success.



SIGGRAPH 2003
SAN DIEGO



SPONSORED BY ACM SIGGRAPH



SIGGRAPH 2003
SAN DIEGO

Reuben H. Fleet Space Theater,
San Diego, CA
July 27 & 28, 2003

Event Organizer: Ed Lantz,
Spitz, Inc.

Fulldome Video Showcase

Introduction

"SIGGRAPH logo animation" – Spitz Creative Media; Animation: Brad Thompson

Lodestar Planetarium, University of New Mexico

"Title credits" - Hue Walker, University of New Mexico and Laurel Ladwig, LodeStar Astronomy Center

"GronkA" - LA-based artist Gronk, with Hue Walker - through the UNM Technology artist-in-residence program

"Jellies" - Marcos Baca; Marty Martinez; Keith Baca; Constance Rush; Irmin Weymeier

"Astro" - Sheryl Hurley, Computer Science & High Performance Computing Research & Education Center, Chris Jordan, Computer Science & High Performance Computing Research & Education Center, Laurel Ladwig, LodeStar Astronomy Center Digital Pueblo Project, UNM, NSF; Hue Walker, guru; Thomas Michael Keegan; Ty Ryder; Dan McGraw; Alex Kolberg; Cat Vanderpool; Sam Stanley; Chris Davis, instructor; Aaron Romero, instructor; Bryce Hemple; Digital Pueblo Project leaders: Ed Angel, Ernie Herrera, Hue Walker, Sally Bowler-Hill

"Sampo Falling" - UC-Berkeley faculty Greg Niemeyer & Stanford University's Chris Chafe - UNM's Arts Technology artist-in-residence program

"Snow Globe" - Aaron Romero, University of New Mexico

"HW Birds" - Hue Walker, Media Arts, Computer Science & Digital Pueblo Project

"Lumia" - Santa Fe-based composer Michael Stearns (Earth Turtle Studio) and light sculptor Gregg Stephens (Gregg Stephens Design) - independent works



Spitz, Inc. Creative Media

"DarkStar Adventure" – Produced by Spitz Creative Media; Producer: Mike Bruno; Story Concept: John Stoke; Animation Design & Direction: Brad Thompson; Animators: Bill Carr, Inna Leonov, Brad Thompson, Wes Thompson; Voices: Liz Seymour, Marcus Stevens, Chris Chandler; Music: John Avarese

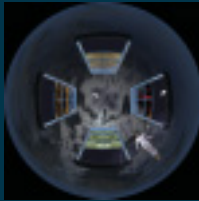
"Oasis In Space" - Produced by Spitz Creative Media; Producer: Mike Bruno; Animation Design & Direction: Brad Thompson; Animators: Bill Carr, Inna Leonov, Brad Thompson, Wes Thompson, Theo A. Artz; Music: John Avarese

"Space Library" - Produced by Spitz Creative Media; Animation Design & Direction: Brad Thompson; Animators: Brad Thompson, Bill Carr, Inna Leonov; Music: John Avarese

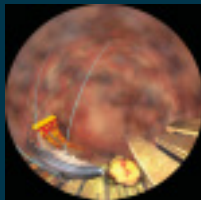
"Legends of the Night Sky: Orion" – Produced by AudioVisual Imagineering & Spitz, Inc.; Director: Eddie Pittman; Technical Director: Joe Sandstrom; Screenplay by Derek Mackey and Eddie Pittman; Produced by Willie Castro; Executive Producer: Joanne Young; Voices: Bob Norris, Miriam P. Saunders, Ginny Pittman; Animators: Willie Castro, Ceú D'Ellia, David Lawter, John Nunnemacher, Eddie Pittman, Christian Slade; Computer Animation/Models/Rigging: Joe Sandstrom; Backgrounds/Layout: Eddie Pittman; Scanning/Ink and Paint: Dave Lawter; Dome Compositing: Joe Sandstrom; Editing: Eddie Pittman; Sound by: Synergy Project, Orlando, Florida; Sound Engineers: Jonathan Owen, Tanya Davis; Systems Administrator: Karl Haglund

National Space Center

"Mars" and "Show Reel" – Produced by the National Space Center, Producer/Director: Annette Sotheran; Lead Animator: Andy Gregory; Senior Animator: Roger Jones; Animator: Paul Mowbray; Production Assistant: Helen Osbourn; Music & Fx: sonicXploras; Surround Sound Mix: George Barnett



Arts

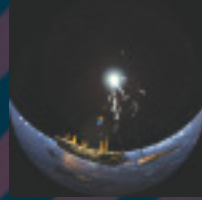


Space Telescope Institute

"Cosmic Cruising 2" - Visualization by Frank Summers, Space Telescope Science Institute (summers@stsci.edu /tel:410-338-4749); Simulation by Martin White and Lars Hernquist, Harvard University; Music: John Avarese

"Galaxy Collision" - Visualization by Frank Summers, Space Telescope Science Institute; Simulation by Chris Mihos (Case Western Reserve University) and Lars Hernquist (Harvard University). This material is based upon work supported by the National Science Foundation under Cooperative Agreement No. ACI-9619019, PACI Sub-Award 813, through the University of Illinois; Music: John Avarese

"Evolution of a Globular Star Cluster" - Visualization by Frank Summers, Space Telescope Science Institute; Simulation by Simon Portegies Zwart, Boston University; Music: John Avarese



Home Run Pictures

"Night of the Titanic" – Produced by HRP; Producer: Carolyn Sumners; Director: Tom Casey; Animators: Tom Nypaver, Desiree Roy, Gerry Wagner

"Microcosm: The Adventure Within" – Produced by HRP; CoProducers: Michael Daut (E&S), Tom Casey (HRP); Director: Tom Casey; Animators: Tom Nypaver, Desiree Roy, Gerry Wagner

"Big Bang" – Produced by HRP; Producer: Carolyn Sumners; Director: Tom Casey; Animators: Tom Nypaver, Desiree Roy, Gerry Wagner

"Wild Ride – Canyon/Thunderstorm" – Produced by HRP; Producer: Carolyn Sumners; Director: Tom Casey; Animators: Tom Nypaver, Gerry Wagner

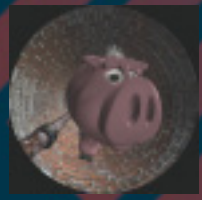
Evans & Sutherland

"Wonders of the Universe" "New Horizons" "Cosmic Safari" "Universe" – All produced by Evans & Sutherland; Visuals by Donald R. Davis

"Microcosm" - Produced by Evans & Sutherland; Visuals by Home Run Pictures

"Force 5" - Produced by the Houston Museum of Natural Science; Visuals by Sybilmedia

"Titanic - The Science of the Sinking" - Produced by the Houston Museum of Natural Science, Visuals by HMNS and Home Run Pictures



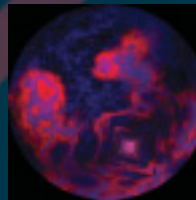
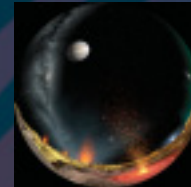
Drexel University and amalgamation house, Inc.

"In a Pig's Eye" – Director-Animator: Theo. A. Artz; Co-director-Animators: Max Callahan, Christopher P. Redmann; Student Animators: John A. Wasong, Jasper Zhineng Zhang, David Abrams; Music: John Avarese

Clark Planetarium

"The Secret of the Cardboard Rocket" – Director/Producer: AaronMcEuen; Project Coordinator: Mike Murray; Animators: Aaron McEuen, Jonathon Dansie, Spencer Christopherson, Andrea Christopher; Audio: Joe Stohel

"Rock Hall of Fame" – Director: Mike Murray; Producer: Aaron McEuen; Animators: Aaron McEuen, Jonathon Dansie, Spencer Christopherson, Andrea Christopher, Joe Stohel; Audio: Joe Stohel; Additional Animations by (under license) Don Davis for E & S, Aaron McEuen for Starlight Productions

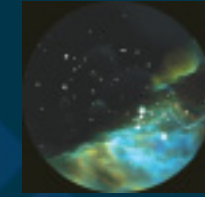


SkySkan, Inc.

"Dome Demo" - ISS/Shuttle Dock, Animator: David Miller

"SkyVision Project" – Rooms, Animator: Kevin Beaulieu

"Infinity Express Rocketry" – Animators: David Miller, Joanna Gardener



American Museum of Natural History, Frederick Phineas and Sandra Priest Rose Center for Earth and Space, The Hayden Planetarium

The Orion Nebula, from "Passport to the Universe"- Model based on observations by C. R. O'Dell, Ph.D. and Z. Wen, Ph.D.; Model construction by Digital Galaxy Project, American Museum of Natural History, Carter Emmart, director and Erik Wesselac, graphics programmer; Volume rendering technique and software by San Diego Supercomputer Center, Dave Nadeau, Ph.D., and Jon Genetti, Ph.D. Principal Visualization Scientists

Mars, Europa, Exoplanets and Earth Formation, from "Search for Life, Are We Alone" - Produced by the American Museum of Natural History, Frederick Phineas and Sandra Priest Rose Center for Earth and Space, The Hayden Planetarium

Developed in collaboration with the National Aeronautics and Space Administration (NASA); Written by Ann Druyan, Cosmos Studios & Steven Soter, American Museum of Natural History

Scientific Visualization and Simulation Computation by: National Center for Supercomputing Applications & San Diego Supercomputer Center; San Diego Supercomputer Center, University of California, San Diego; Visualization Programmers: David R. Nadeau & Erik Enquist; National Center for Supercomputing Applications University of Illinois, Urbana-Champaign; Visualization Producer: Donna Cox; Flight Path Designer: Robert Patterson; Visualization Programmer: Stuart Levy; Rose Center Productions, American Museum of Natural History

Executive Producer: Anthony Braun; Producer: Christopher Scollard; Visualization Director: Carter Emmart; Science Visualizer: Ryan Wyatt

Lead Technical Director: Clay Budin; Technical Directors: Mark E. Bajuk, Erik Wesselac, Joshua D. Minges; Science Programmers: Jeffrey S. Oishi, Yuxing Li; Creative Director: Gretchen Schwarz; Graphic Artist: Scott Ewalt; Production Manager: Sarah Rice

Rose Center Engineering: Director, Aram Friedman; Jeff Galitzer, Tom Saylor, Christy MacKarrell, Russell C. Baird, Jr., Loretta Skeddle, Matt Pursley, Sanjay Patel, Jaeho Choi, Radu Polizu, Joe Kiss, John Montenegro, Jodi Crews

Science Simulations and Data: Mordecai-Mark Mac Low, American Museum of Natural History, Tom Abel, Pennsylvania State University, Miguel A. P. de Avillez, Universidade de Évora, John F. Hawley, University of Virginia, Charlottesville, Jarrod Hurley, American Museum of Natural History, Eiichiro Kokubo, National Astronomical Observatory of Japan, Pakshing Li, National Center for Supercomputing Applications, David Malin, Anglo Australian Observatory, Michael Norman, University of California, San Diego, Lucian Plesea and David Seal, NASA/JPL/Caltech, Paul Schenk, Lunar and Planetary Institute, C.R. Scotese, PALEOMAP Project, University of Texas, Arlington, Carol Stoker, Eric Zbinden and Joel Hagen, NASA-Ames Research Center, R. Brent Tully, University of Hawaii

Planetary data from NASA; Stellar data from ESA Hipparcos astrometric satellite mission; Digital Universe Atlas, American Museum of Natural History; The Galaxy Catalog by Zsolt Frei and James E. Gunn, Princeton University; John Gleason, Celestial Images

